

**H24036 – The Christmas Eve**

Gluten	Soya	Peanuts	Nuts	Sesame	Lupin	Milk	Eggs	Sulphites	Celery	Mustard	Fish	Molluscs	Crustacean
<b>Mandatory allergens contains:</b>													
✓	✓	✓	✓	✓		✓	✓	✓	z	z			
<b>Key</b>													
✓	Listed in ingredients												
z	May contain traces												

**Product Name:** Domaine Boyar Deer Point Cabernet Sauvignon 75cl (12.5% ABV)

**Ingredients:** N/A

**Allergens:** Contains **SULPHITES**.

**Storage:** Store in a cool, dry place.

**Typical Value per 100g**

<b>Energy (kj):</b>	N/A
<b>Energy (kcal):</b>	N/A
<b>Fat (g):</b>	N/A
<b>Fat of which saturates (g):</b>	N/A
<b>Carbohydrate (g):</b>	N/A
<b>Carbohydrate of which sugars (g):</b>	N/A
<b>Protein (g):</b>	N/A
<b>Salt (g):</b>	N/A

**Product Name:** Domaine Boyar Deer Point Sauvignon Blanc 75cl (12% ABV)

**Ingredients:** N/A

**Allergens:** Contains **SULPHITES**.

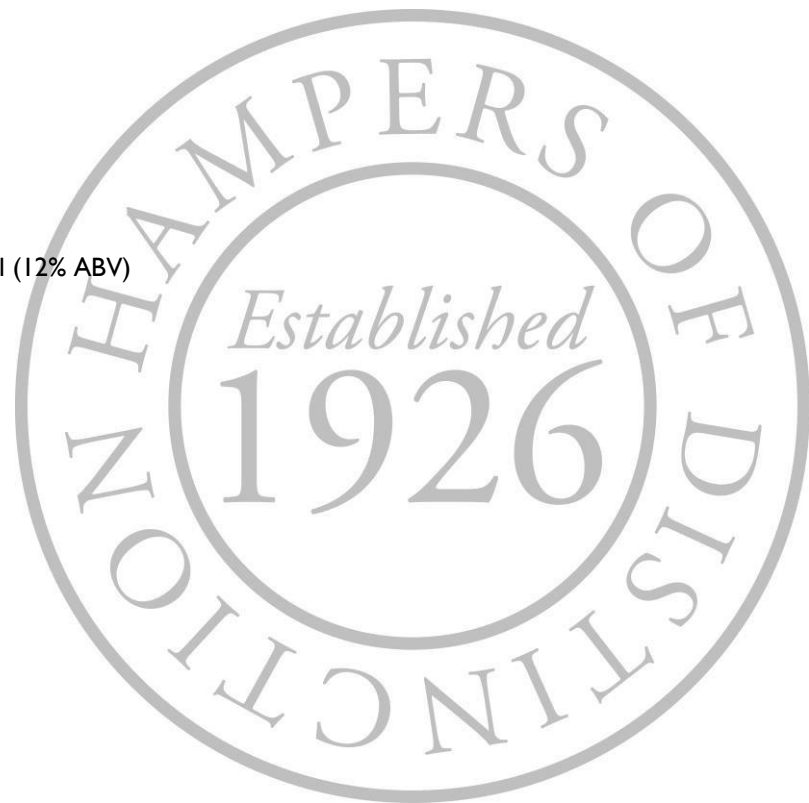
**Storage:** Store in a cool, dry place.

**Typical Value per 100g**

<b>Energy (kj):</b>	N/A
<b>Energy (kcal):</b>	N/A
<b>Fat (g):</b>	N/A
<b>Fat of which saturates (g):</b>	N/A
<b>Carbohydrate (g):</b>	N/A
<b>Carbohydrate of which sugars (g):</b>	N/A
<b>Protein (g):</b>	N/A
<b>Salt (g):</b>	N/A

**Product Name:** Bottega Spa Casa Bottega Prosecco DOC 75cl (11% ABV)

**Ingredients:** N/A



**Allergens:** Contains **SULPHITES**.

**Storage:** Store in a cool, dry place.

**Typical Value per 100g**

<b>Energy (kj):</b>	N/A
<b>Energy (kcal):</b>	N/A
<b>Fat (g):</b>	N/A
<b>Fat of which saturates (g):</b>	N/A
<b>Carbohydrate (g):</b>	N/A
<b>Carbohydrate of which sugars (g):</b>	N/A
<b>Protein (g):</b>	N/A
<b>Salt (g):</b>	N/A

**Product Name:** Grandma Wild's 4 Traditional Mince Pies

**Ingredients:** Mincemeat (52%) (Sugar, Apple Puree (Apple Puree, Preservative: Acetic Acid), Vine Fruits (28%) (Sunflower Oil), Glucose Fructose Syrup, Mixed Peel (4%) (Orange Peel, Glucose Fructose Syrup, Sugar, Lemon Peel, Acidity Regulator: Citric Acid), Vegetable Suet (Palm Oil, Rice Flour, Sunflower Oil), Acidity Regulator: Acetic Acid, Citric Acid, Modified Maize Starch, Mixed Spice, Roast Barley Malt Extract, Colour: Caramel, Salt, Orange Oil, Lemon Oil), **WHEAT** Flour (**WHEAT** Flour, Calcium Carbonate, Iron, Niacin, Thiamin), Vegetable Oil (Palm, Rapeseed, Water, Salt, Natural Flavouring), Sugar, Maize Starch, Invert Sugar Syrup.

**Allergens:** For allergens, see ingredients in **CAPITALS**. Not suitable for **NUT** and **SESAME** allergy sufferers. May also contain **EGG, MILK, MUSTARD, SOYA, PEANUT** and other **GLUTEN** sources (**OAT, Spelt, Rye**).

**Storage:** Store in a cool dry place. Once opened store in an airtight container.

**Typical Value per 100g**

<b>Energy (kj):</b>	1591
<b>Energy (kcal):</b>	379
<b>Fat (g):</b>	15
<b>Fat of which saturates (g):</b>	5.7
<b>Carbohydrate (g):</b>	60
<b>Carbohydrate of which sugars (g):</b>	35
<b>Protein (g):</b>	2.3
<b>Salt (g):</b>	0.21

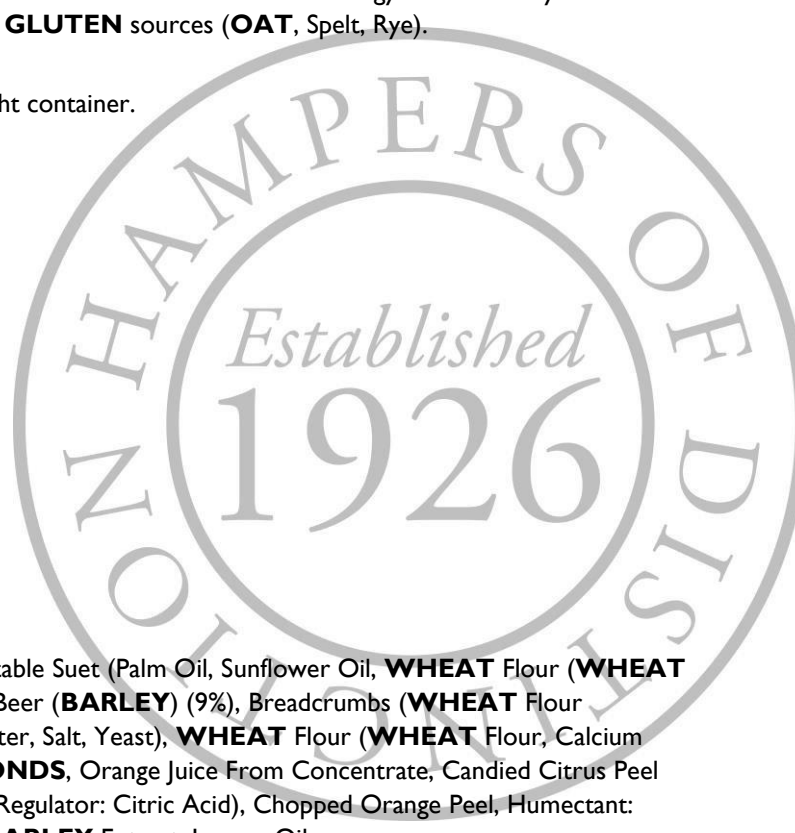
**Product Name:** Cole's Classic Christmas Pudding 112g

**Ingredients:** Vine Fruits (41%) (Sultanas, Raisins, Currants), Vegetable Suet (Palm Oil, Sunflower Oil, **WHEAT** Flour (**WHEAT** Flour, Calcium Carbonate, Iron, Niacin, Thiamine)), Brown Sugar, Beer (**BARLEY**) (9%), Breadcrumbs (**WHEAT** Flour (**WHEAT** Flour, Calcium Carbonate, Iron, Niacin, Thiamine), Water, Salt, Yeast), **WHEAT** Flour (**WHEAT** Flour, Calcium Carbonate, Iron, Niacin, Thiamine), Golden Syrup, Ground **ALMONDS**, Orange Juice From Concentrate, Candied Citrus Peel (Orange Peel, Lemon Peel, Glucose - Fructose Syrup, Salt, Acidity Regulator: Citric Acid), Chopped Orange Peel, Humectant: Vegetable Glycerol, Lemon Juice From Concentrate, Salt, Malted **BARLEY** Extract, Lemon Oil.

**Allergens:** For allergens, see ingredients in **CAPITALS**.

**Storage:** Store in a cool, dry place.

**Typical Value per 100g**



<b>Energy (kj):</b>	1466
<b>Energy (kcal):</b>	349
<b>Fat (g):</b>	12
<b>Fat of which saturates (g):</b>	5.8
<b>Carbohydrate (g):</b>	54
<b>Carbohydrate of which sugars (g):</b>	44
<b>Protein (g):</b>	3.3
<b>Salt (g):</b>	0.63

**Product Name:** Hamlet Deluxe Collection 175g

**Ingredients:** Assorted Chocolates with 36% Filling (21% Caramel Filling, 8% **HAZELNUT** Filling, 7% Raspberry Filling). Sugar, Whole **MILK** Powder, Glucose Syrup, Cocoa Butter, Cocoa Mass, Vegetable Oils (Palm, Rapeseed) In Varying Proportions, Sweetened Condensed Skimmed **MILK**, **HAZELNUTS** 2.8%, Coconut Fat, Flavourings: Vanilla and Raspberry, Butter Oil (**MILK**), Emulsifiers: Lecithins (Incl. **SOY**) And E471, Salt.

**Allergens:** For allergens, see ingredients in **CAPITALS**.

**Storage:** Store in a cool, dry place.

**Typical Value per 100g**

<b>Energy (kj):</b>	2200
<b>Energy (kcal):</b>	527
<b>Fat (g):</b>	32
<b>Fat of which saturates (g):</b>	18
<b>Carbohydrate (g):</b>	54
<b>Carbohydrate of which sugars (g):</b>	48
<b>Protein (g):</b>	5.6
<b>Salt (g):</b>	0.2

**Product Name:** Buiteman Cheddar Biscuits 75g

**Ingredients:** **WHEAT** Flour (**GLUTEN**), Vegetable Oils (Rapeseed, Palm), Matured Cheddar Cheese 22% (**MILK**, Potato Starch, Salt, Starter Culture, Vegetarian Rennet), Barn **EGG**, Yeast, Dried **MILK**, Salt, Sugar, Emulsifier: E471, Spices, Yeast Extract, Colour: Paprika Extract, Acidity Regulator: Citric Acid, Natural Flavouring.

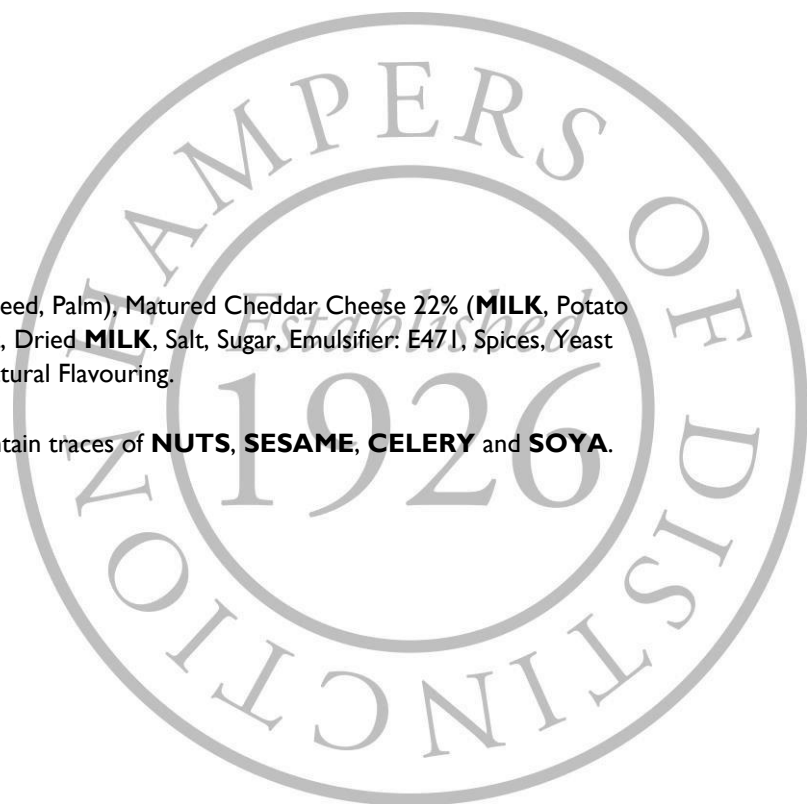
**Allergens:** For allergens, see ingredients in **CAPITALS**. May contain traces of **NUTS**, **SESAME**, **CELERY** and **SOYA**.

**Storage:** Store in a cool, dry place.

**Typical Value per 100g**

<b>Energy (kj):</b>	2283
<b>Energy (kcal):</b>	548
<b>Fat (g):</b>	35
<b>Fat of which saturates (g):</b>	15
<b>Carbohydrate (g):</b>	44
<b>Carbohydrate of which sugars (g):</b>	0.9
<b>Protein (g):</b>	13
<b>Salt (g):</b>	2.4

**Product Name:** Bon Bons All Butter Fudge 150g



**Ingredients:** Sugar, Salted Butter (16%) (**MILK**, Salt), Sweetened Condensed **MILK** (**MILK**, Sugar), Glucose Syrup, Golden Syrup.

**Allergens:** For allergens, see ingredients in **CAPITALS**. May contain traces of **NUTS**, **PEANUTS** and **WHEAT**.

**Storage:** Store in a cool, dry place. Once opened store in an airtight container.

**Typical Value per 100g**

<b>Energy (kj):</b>	1908
<b>Energy (kcal):</b>	454
<b>Fat (g):</b>	16
<b>Fat of which saturates (g):</b>	11
<b>Carbohydrate (g):</b>	77
<b>Carbohydrate of which sugars (g):</b>	71
<b>Protein (g):</b>	1.2
<b>Salt (g):</b>	0.3

**Product Name:** Brown Bag Oak Smoked Chilli Crisps 150g

**Ingredients:** Potatoes, Rapeseed Oil, Seasoning (8%) (Oak Smoked Sugar, Sea Salt, Sugar, Garlic Powder, Rice Flour, Onion Powder, Cumin, Tomato Powder, Chilli, Scotch Bonnet Chilli, Oak Smoked Salt, Yeast Extract Powder, Natural Flavourings, Acid: Citric Acid, Paprika Extract).

**Allergens:** For allergens, see ingredients in **CAPITALS**.

**Storage:** Store in a cool, dry place.

**Typical Value per 100g**

<b>Energy (kj):</b>	2078
<b>Energy (kcal):</b>	497
<b>Fat (g):</b>	26.8
<b>Fat of which saturates (g):</b>	2.3
<b>Carbohydrate (g):</b>	58.9
<b>Carbohydrate of which sugars (g):</b>	3.4
<b>Protein (g):</b>	5.2
<b>Salt (g):</b>	1.9

**Product Name:** Mr Filberts Rose Harissa Peanuts 75g

**Ingredients:** **PEANUTS** (91%), Sugar, Rose Harissa (2%) [Rehydrated Red Peppers, Sunflower Oil, Spices, Garlic, Salt, Rose Petals, Acidity Regulator: Citric Acid], Salt, Black Pepper, Garlic Powder, Rapeseed Oil.

**Allergens:** For allergens, see ingredients in **CAPITALS**. May contain other **NUTS**.

**Storage:** Store in a cool, dry place.

**Typical Value per 100g**

<b>Energy (kj):</b>	2623
<b>Energy (kcal):</b>	633
<b>Fat (g):</b>	52
<b>Fat of which saturates (g):</b>	6.8



<b>Carbohydrate (g):</b>	12
<b>Carbohydrate of which sugars (g):</b>	7.2
<b>Protein (g):</b>	27
<b>Salt (g):</b>	0.9

**Product Name:** Mighty Fine Gingerbread Milk Chocolate Honeycomb 2x90g

**Ingredients:** MILK Chocolate (36%) (Sugar, Cocoa Butter, Whole MILK Powder, Cocoa Mass, Emulsifier: SOYA Lecithin, Flavourings), Sugar, Glucose Syrup, Honey (1%), Raising Agent: Sodium Bicarbonate, Salt.

**Allergens:** For allergens, see ingredients in **CAPITALS**. May contain **MILK, PEANUTS**, and other **NUTS**.

**Storage:** Store in a cool, dry place out of direct sunlight.

**Typical Value per 100g**

<b>Energy (kj):</b>	1840
<b>Energy (kcal):</b>	437
<b>Fat (g):</b>	12.4
<b>Fat of which saturates (g):</b>	7.5
<b>Carbohydrate (g):</b>	78.5
<b>Carbohydrate of which sugars (g):</b>	63.1
<b>Protein (g):</b>	2.8
<b>Salt (g):</b>	1.43

**Product Name:** Anna's Ginger Thins 150g

**Ingredients:** WHEAT Flour, Sugar, Vegetable Oils (Palm, Rapeseed, Coconut), Sugar Syrup, Salt, Raising Agent (Sodium Hydrogen Carbonate), Cinnamon, Salt, Ginger 0.3%, Cloves.

**Allergens:** For allergens, see ingredients in **CAPITALS**. May contain traces of **ALMOND**.

**Storage:** Store in a cool dry place, avoiding direct sunlight.

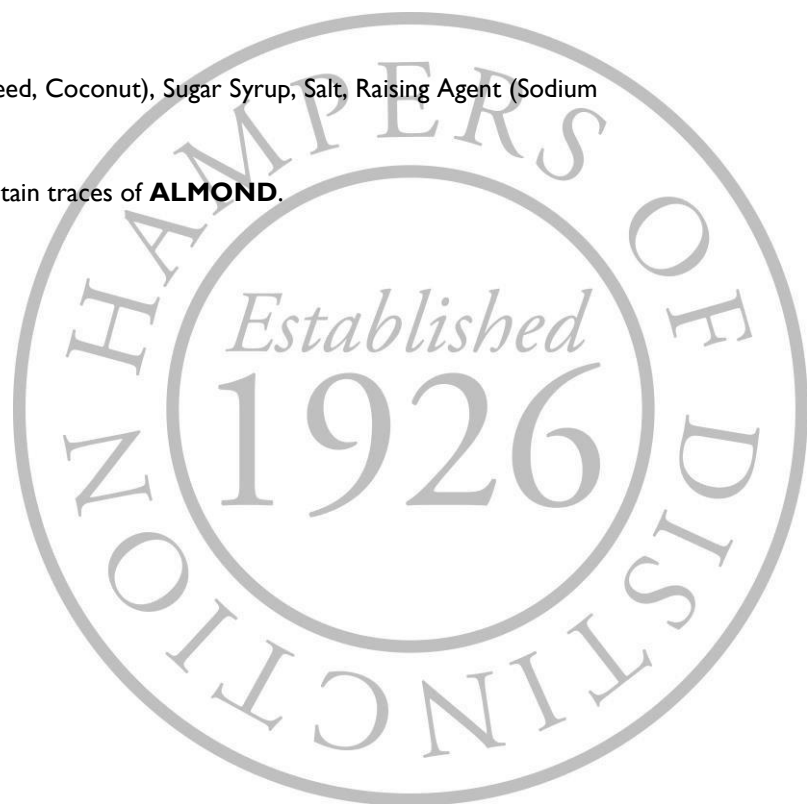
**Typical Value per 100g**

<b>Energy (kj):</b>	1979
<b>Energy (kcal):</b>	471
<b>Fat (g):</b>	19
<b>Fat of which saturates (g):</b>	9
<b>Carbohydrate (g):</b>	70
<b>Carbohydrate of which sugars (g):</b>	33
<b>Protein (g):</b>	5.4
<b>Salt (g):</b>	1.19

**Product Name:** Hebridean Baker Mixed Berry Oatie 150g

**Ingredients:** OATS (29.1%), Sugar, WHEAT Flour (Calcium Carbonate, Iron, Niacin, Thiamin), Margarine (Palm Oil, Rapeseed Oil, Water, Salt, Emulsifier: E475, Colour E100; E160b, Flavourings), Butter (MILK), Cornflour, Raising Agents: E450i; E500ii, Skimmed MILK Powder, Water, Blackcurrants (1%), Raspberries (0.8%), Blueberries (0.6%), Salt.

**Allergens:** For allergens, see ingredients in **CAPITALS**. May contains **CELERY, EGGS, MUSTARD, NUTS, SESAME, SOYA**.



**Storage:** Once opened, store in an airtight container in a cool, dry place.

**Typical Value per 100g**

<b>Energy (kj):</b>	2252
<b>Energy (kcal):</b>	538
<b>Fat (g):</b>	26.4
<b>Fat of which saturates (g):</b>	11.4
<b>Carbohydrate (g):</b>	66.5
<b>Carbohydrate of which sugars (g):</b>	27.7
<b>Protein (g):</b>	6.5
<b>Salt (g):</b>	2.3

**Product Name:** Cartwright & Butler Tomato & Basil Seeded Flatbreads 130g

**Ingredients:** **WHEAT** Flour (43%), Water, Whole Grain **RYE** Flour (9%), **RYE** Bran, Yeast, Rapeseed Oil, Dried Tomato (3%), Linseeds, **SESAME** Seeds, Sugar, Sea Salt, Dried Basil (0.7%).

**Allergens:** For allergens, see ingredients in **CAPITALS**. May also contain traces of **MILK** and **NUTS**.

**Storage:** Once opened store in a cool, dry place away from direct sunlight in an airtight container.

**Typical Value per 100g**

<b>Energy (kj):</b>	1654
<b>Energy (kcal):</b>	393
<b>Fat (g):</b>	9.5
<b>Fat of which saturates (g):</b>	1.1
<b>Carbohydrate (g):</b>	57.7
<b>Carbohydrate of which sugars (g):</b>	5.2
<b>Protein (g):</b>	13.9
<b>Salt (g):</b>	1.7

**Product Name:** Original Cake Co. Iced Cake Slab 400g

**Ingredients:** Sultanas (46%), **WHEAT** Flour (Contains Calcium, Iron, Niacin, Thiamin), Sugar, **EGG**, Icing (7%) (Sugar, Glucose Syrup, Palm Oil, Water, Humectant: Glycerine (E422), Emulsifier (E471), Stabiliser (E466), Preservative (E202), Flavouring, Colour (E171)), Marzipan (7%) (Sugar, **ALMONDS**, Corn Syrup, Water, Sorbitol (E420), Preservative E202, Thickener (E401), Stabiliser (Invertase)) [**NUTS**], Margarine (Vegetable Oil (Palm & Rapeseed), Water, Salt, Emulsifier : Distilled Monoglyceride (E471), Flavouring, Colouring (E160b, E100)), Butter [**MILK**], Glucose, Black Treacle, Emulsifier: Vegetable Glycerine (E422), Caramel Colour E150c, Raising Agents: E500, E450 [**WHEAT**].

**Allergens:** For allergens, see ingredients in **CAPITALS**.

**Storage:** Store in a cool, dry place out of direct sunlight.

**Typical Value per 100g**

<b>Energy (kj):</b>	1588
<b>Energy (kcal):</b>	377
<b>Fat (g):</b>	9
<b>Fat of which saturates (g):</b>	3.9
<b>Carbohydrate (g):</b>	69
<b>Carbohydrate of which sugars (g):</b>	58
<b>Protein (g):</b>	4.1
<b>Salt (g):</b>	0.19



**Product Name:** Mrs Darlington's Strawberry Extra Jam 340g

**Ingredients:** Sugar, Strawberries, Gelling Agent: Pectin, Lemon Juice. Prepared with 50 grams of fruit per 100 grams.

**Allergens:** For allergens, see ingredients in **CAPITALS**.

**Storage:** Store in a cool, dry place. Once opened refrigerate.

**Typical Value per 100g**

<b>Energy (kj):</b>	1042
<b>Energy (kcal):</b>	245
<b>Fat (g):</b>	0.2
<b>Fat of which saturates (g):</b>	0
<b>Carbohydrate (g):</b>	60.7
<b>Carbohydrate of which sugars (g):</b>	60.5
<b>Protein (g):</b>	0.3
<b>Salt (g):</b>	0

**Product Name:** Elizabeth Shaw Milk Cinnamon Stars 125g

**Ingredients:** Sugar, Cocoa Mass, Whole **MILK** Powder, Cocoa Butter, Anhydrous **MILK** Fat, **WHEAT** Starch, Emulsifier: **SOYA** Lecithin, Cinnamon, Natural Cinnamon Flavouring, Glucose Syrup, Natural Colours: Carrot, Safflower and Spirulina Extracts, Natural Vanilla Flavouring, Vegetable Oil (Coconut), Glazing Agent: Beeswax. **MILK** Chocolate contains: Cocoa Solids 32% min; **MILK** Solids 14% min.

**Allergens:** For allergens, see ingredients in **CAPITALS**. Also, may contain **PEANUTS** and **NUTS**.

**Storage:** Store in a cool, dry place.

**Typical Value per 100g**

<b>Energy (kj):</b>	2214
<b>Energy (kcal):</b>	530
<b>Fat (g):</b>	30
<b>Fat of which saturates (g):</b>	19
<b>Carbohydrate (g):</b>	58
<b>Carbohydrate of which sugars (g):</b>	56
<b>Protein (g):</b>	5.6
<b>Salt (g):</b>	0.10

**Product Name:** Love Popcorn Caramelised Biscuit Crumb 100g

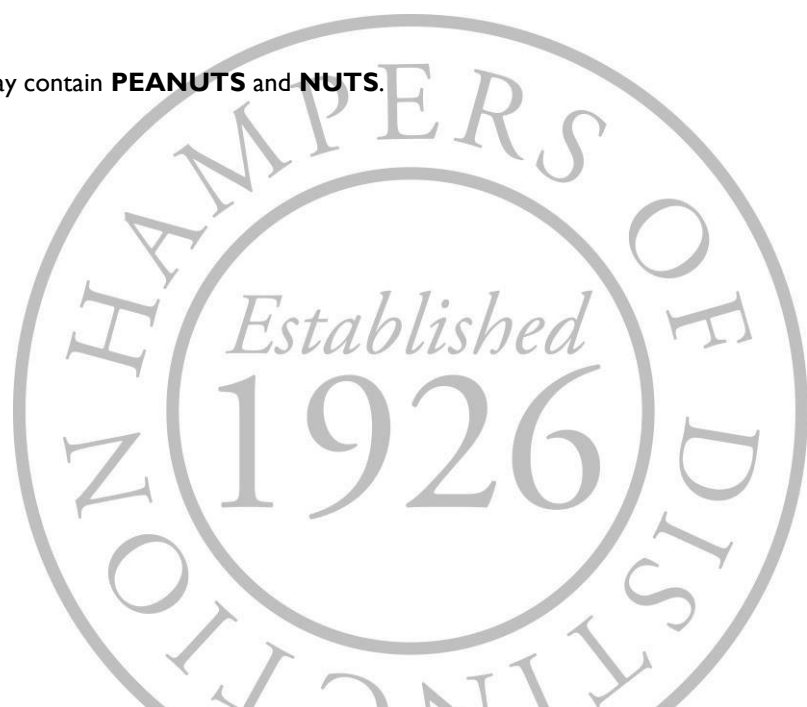
**Ingredients:** **WHEAT** Flour, Sugar, Vegetable Oils (Palm Oil from sustainable and certified plantations, Rapeseed Oil), Candy Sugar Syrup, Raising Agent (Sodium Hydrogen Carbonate), **SOYA** Flour, Salt, Cinnamon], Sugar, Golden Syrup, Coconut Oil, Glucose Syrup, Ground Cinnamon, Rapeseed Oil, Baking Soda, Salt, Flavouring, Lecithin Powder/Granules (**SOYA**).

**Allergens:** For allergens, see ingredients in **CAPITALS**.

**Storage:** Store in a cool, dry place.

**Typical Value per 100g**

<b>Energy (kj):</b>	1847
---------------------	------



<b>Energy (kcal):</b>	439
<b>Fat (g):</b>	14
<b>Fat of which saturates (g):</b>	8.1
<b>Carbohydrate (g):</b>	72
<b>Carbohydrate of which sugars (g):</b>	44
<b>Protein (g):</b>	4.4
<b>Salt (g):</b>	1.4

