

**H24023 – The Redsleeves**

| Gluten                               | Soya                  | Peanuts | Nuts | Sesame | Lupin | Milk | Eggs | Sulphites | Celery | Mustard | Fish | Molluscs | Crustacean |
|--------------------------------------|-----------------------|---------|------|--------|-------|------|------|-----------|--------|---------|------|----------|------------|
| <b>Mandatory allergens contains:</b> |                       |         |      |        |       |      |      |           |        |         |      |          |            |
| ✓                                    | ✓                     | ✓       | z    | z      |       | ✓    | z    | ✓         |        | z       |      |          |            |
| <b>Key</b>                           |                       |         |      |        |       |      |      |           |        |         |      |          |            |
| ✓                                    | Listed in ingredients |         |      |        |       |      |      |           |        |         |      |          |            |
| z                                    | May contain traces    |         |      |        |       |      |      |           |        |         |      |          |            |

**Product Name:** Giant Old Vibe Red 75cl (13.5% ABV)

**Ingredients:** N/A

**Allergens:** Contains **SULPHITES**.

**Storage:** Store in a cool, dry place.

**Typical Value per 100g**

|  |     |
|--|-----|
| <b>Energy (kj):</b>                      | N/A |
| <b>Energy (kcal):</b>                    | N/A |
| <b>Fat (g):</b>                          | N/A |
| <b>Fat of which saturates (g):</b>       | N/A |
| <b>Carbohydrate (g):</b>                 | N/A |
| <b>Carbohydrate of which sugars (g):</b> | N/A |
| <b>Protein (g):</b>                      | N/A |
| <b>Salt (g):</b>                         | N/A |

**Product Name:** Grandma Wild's 4 Traditional Mince Pies

**Ingredients:** Mincemeat (52%) (Sugar, Apple Puree (Apple Puree, Preservative: Acetic Acid), Vine Fruits (28%) (Sunflower Oil), Glucose Fructose Syrup, Mixed Peel (4%) (Orange Peel, Glucose Fructose Syrup, Sugar, Lemon Peel, Acidity Regulator: Citric Acid), Vegetable Suet (Palm Oil, Rice Flour, Sunflower Oil), Acidity Regulator: Acetic Acid, Citric Acid, Modified Maize Starch, Mixed Spice, Roast Barley Malt Extract, Colour: Caramel, Salt, Orange Oil, Lemon Oil), **WHEAT** Flour (**WHEAT** Flour, Calcium Carbonate, Iron, Niacin, Thiamin), Vegetable Oil (Palm, Rapeseed, Water, Salt, Natural Flavouring), Sugar, Maize Starch, Invert Sugar Syrup.

**Allergens:** For allergens, see ingredients in **CAPITALS**. Not suitable for **NUT** and **SESAME** allergy sufferers. May also contain **EGG, MILK, MUSTARD, SOYA, PEANUT** and other **GLUTEN** sources (**OAT, Spelt, Rye**).

**Storage:** Store in a cool dry place. Once opened store in an airtight container.

**Typical Value per 100g**

|  |      |
|--|------|
| <b>Energy (kj):</b>                      | 1591 |
| <b>Energy (kcal):</b>                    | 379  |
| <b>Fat (g):</b>                          | 15   |
| <b>Fat of which saturates (g):</b>       | 5.7  |
| <b>Carbohydrate (g):</b>                 | 60   |
| <b>Carbohydrate of which sugars (g):</b> | 35   |
| <b>Protein (g):</b>                      | 2.3  |



|           |      |
|-----------|------|
| Salt (g): | 0.21 |
|-----------|------|

**Product Name:** Thornton & France Milk Chocolate Star with Sprinkles 50g

**Ingredients:** (95%) Colombian **MILK** Chocolate (Cocoa Solids 41% Minimum, **MILK** Solids 19% Minimum) (Sugar, Cocoa Butter, **MILK** Powder, Cocoa Mass, Emulsifier: **SOYA** Lecithin; Vanilla Extract), (5%) Gold Sugar Decoration (Sugar, **WHEAT** Starch, Glucose Syrup, Colours: E101, E172; Glazing Agent: Shellac).

**Allergens:** For allergens, see ingredients in **CAPITALS**.

**Storage:** Store in a cool, dry place.

**Typical Value per 100g**

|                                   |         |
|-----------------------------------|---------|
| Energy (kj):                      | 2355.92 |
| Energy (kcal):                    | 562.79  |
| Fat (g):                          | 37.06   |
| Fat of which saturates (g):       | 22.14   |
| Carbohydrate (g):                 | 53.2    |
| Carbohydrate of which sugars (g): | 48.29   |
| Protein (g):                      | 6.57    |
| Salt (g):                         | 0.17    |

**Product Name:** Reids Shortbread Reindeer Bites 150g

**Ingredients:** **WHEAT** Flour (With Calcium Carbonate, Iron, Niacin, Thiamin), Butter (33%) (**MILK**, Salt), Sugar, Cornflour.

**Allergens:** For allergens, see ingredients in **CAPITALS**. May also contains **NUTS** and **SESAME SEEDS**.

**Storage:** Store in a cool, dry place. Once opened, keep in an airtight container.

**Typical Value per 100g**

|                                   |      |
|-----------------------------------|------|
| Energy (kj):                      | 2273 |
| Energy (kcal):                    | 544  |
| Fat (g):                          | 30.1 |
| Fat of which saturates (g):       | 18.8 |
| Carbohydrate (g):                 | 62.7 |
| Carbohydrate of which sugars (g): | 20.5 |
| Protein (g):                      | 4.8  |
| Salt (g):                         | 0.7  |

**Product Name:** Mr Filberts Chilli & Lime Peanuts 40g

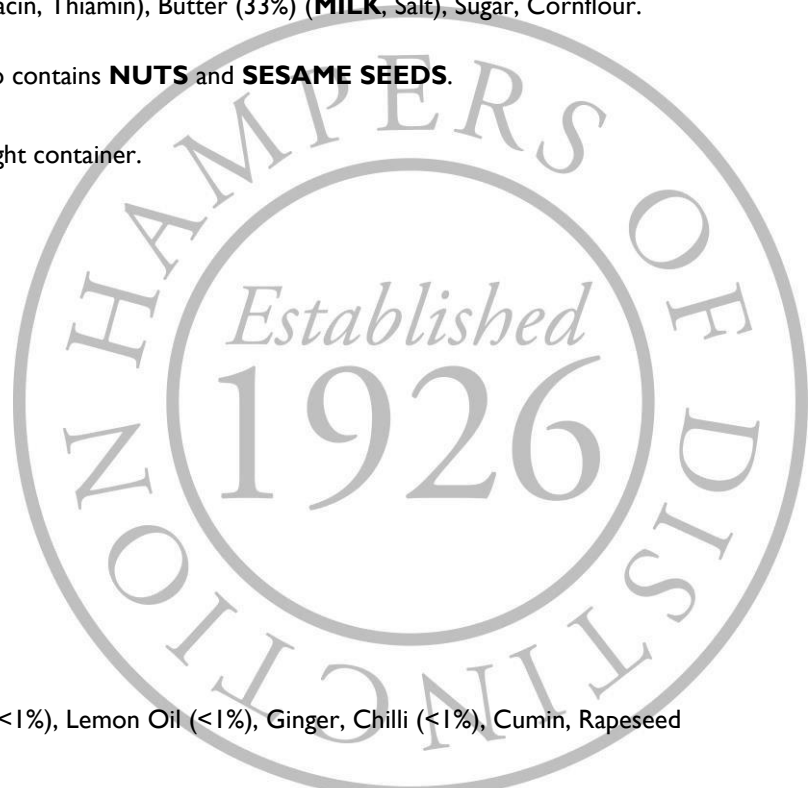
**Ingredients:** Roasted **PEANUTS** (92.5%), Sugar, Salt, Lime Oil (<1%), Lemon Oil (<1%), Ginger, Chilli (<1%), Cumin, Rapeseed Oil, Acidity Regulator: Citric Acid.

**Allergens:** For allergens, see ingredients in **CAPITALS**. Made in an environment where **ALMONDS, CASHEWS** and **HAZELNUTS** are present.

**Storage:** Store in a cool, dry place.

**Typical Value per 100g**

|              |      |
|--------------|------|
| Energy (kj): | 2431 |
|--------------|------|



|  |      |
|--|------|
| <b>Energy (kcal):</b>                    | 587  |
| <b>Fat (g):</b>                          | 46.5 |
| <b>Fat of which saturates (g):</b>       | 5.5  |
| <b>Carbohydrate (g):</b>                 | 12.6 |
| <b>Carbohydrate of which sugars (g):</b> | 7.6  |
| <b>Protein (g):</b>                      | 24.6 |
| <b>Salt (g):</b>                         | 1.10 |

**Product Name:** Lily O'Brien Dark & Milk Choc Blend Caramel & Sea Salt 100g

**Ingredients:** Dark Chocolate 43% [Cocoa Mass, Sugar, Cocoa Butter, Emulsifier (**SOYA** Lecithin), Natural Vanilla Flavouring], **MILK** Chocolate 32% [Sugar, Whole **MILK** Powder, Cocoa Butter, Cocoa Mass, Emulsifier (**SOYA** Lecithin), Natural Vanilla Flavouring], Sticky Toffee Caramel 24.8% [Sugar, Glucose Syrup, Coconut Oil, Water, Sweetened Skimmed Condensed **MILK** (**MILK**, Sugar, Lactose (**MILK**), **MILK** Chocolate (Sugar, Cocoa Butter, Cocoa Mass, Whole **MILK** Powder, Whey Powder (**MILK**), Emulsifier (**SOYA** Lecithin), Butter (**MILK**), Salt)], Sea Salt (0.1%), Natural Flavouring.

**Allergens:** For allergens, see ingredients in **CAPITALS**. May also contain **NUTS, PEANUTS, CEREALS** and **GLUTEN**.

**Storage:** Store in a cool, dry place away from moisture, strong sunlight and odours.

**Typical Value per 100g**

|  |      |
|--|------|
| <b>Energy (kj):</b>                      | 2160 |
| <b>Energy (kcal):</b>                    | 516  |
| <b>Fat (g):</b>                          | 29   |
| <b>Fat of which saturates (g):</b>       | 18   |
| <b>Carbohydrate (g):</b>                 | 58   |
| <b>Carbohydrate of which sugars (g):</b> | 53   |
| <b>Protein (g):</b>                      | 5.4  |
| <b>Salt (g):</b>                         | 0.29 |

**Product Name:** Bramble Strawberry Preserve 114g

**Ingredients:** Sugar, Strawberries, Gelling Agent: Pectin, Acidity Regulator: Citric Acid. Prepared with 45g Fruit per 100g.

**Allergens:** For allergens, see ingredients in **CAPITALS**.

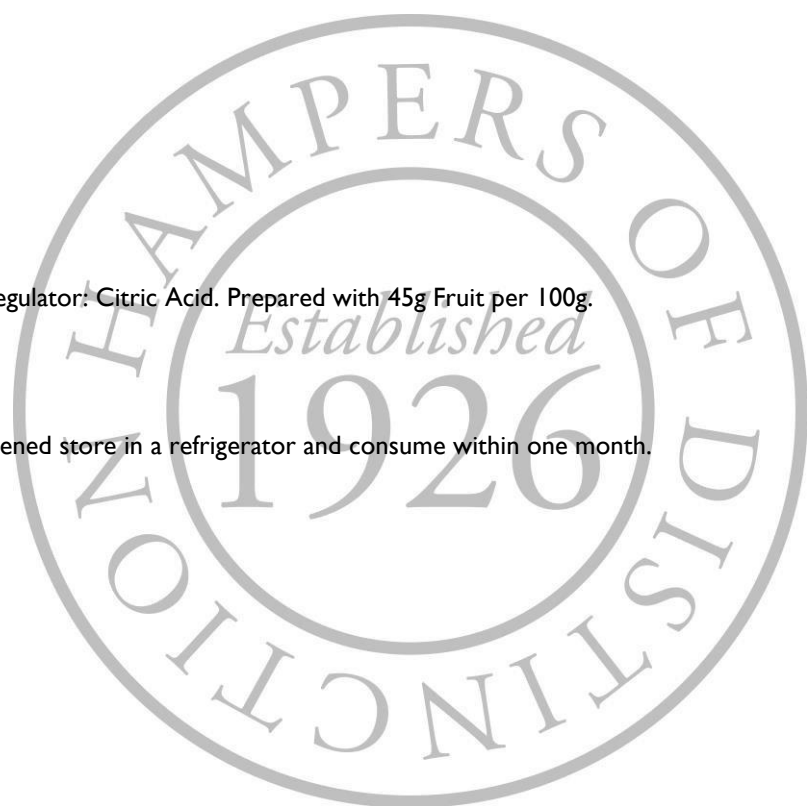
**Storage:** Store in a cool dry place, out of direct sunlight. Once opened store in a refrigerator and consume within one month.

**Typical Value per 100g**

|  |      |
|--|------|
| <b>Energy (kj):</b>                      | 1014 |
| <b>Energy (kcal):</b>                    | 253  |
| <b>Fat (g):</b>                          | 0    |
| <b>Fat of which saturates (g):</b>       | 0    |
| <b>Carbohydrate (g):</b>                 | 63   |
| <b>Carbohydrate of which sugars (g):</b> | 63   |
| <b>Protein (g):</b>                      | 0.3  |
| <b>Salt (g):</b>                         | 0.02 |

**Product Name:** Cartwright & Butler Tomato & Basil Seeded Flatbreads 130g

**Ingredients:** **WHEAT** Flour (43%), Water, Whole Grain **RYE** Flour (9%), **RYE** Bran, Yeast, Rapeseed Oil, Dried Tomato (3%), Linseeds, **SESAME** Seeds, Sugar, Sea Salt, Dried Basil (0.7%).



**Allergens:** For allergens, see ingredients in **CAPITALS**. May also contain traces of **MILK** and **NUTS**.

**Storage:** Once opened store in a cool, dry place away from direct sunlight in an airtight container.

**Typical Value per 100g**

|  |      |
|--|------|
| <b>Energy (kj):</b>                      | 1654 |
| <b>Energy (kcal):</b>                    | 393  |
| <b>Fat (g):</b>                          | 9.5  |
| <b>Fat of which saturates (g):</b>       | 1.1  |
| <b>Carbohydrate (g):</b>                 | 57.7 |
| <b>Carbohydrate of which sugars (g):</b> | 5.2  |
| <b>Protein (g):</b>                      | 13.9 |
| <b>Salt (g):</b>                         | 1.7  |

**Product Name:** Excelcium Choc & Plus Dark Chocolate with Raspberry 107g

**Ingredients:** Cocoa Mass, Sugar, **MILK** Fat, Raspberry, Emulsifier: **SOY** Lecithin, Flavourings. Cocoa Solids: Chocolate: Min. 50%.

**Allergens:** For allergens, see ingredients in **CAPITALS**. May contain traces of **PEANUTS**, **NUTS** and **GLUTEN**.

**Storage:** Store in a cool, dry place.

**Typical Value per 100g**

|  |      |
|--|------|
| <b>Energy (kj):</b>                      | 2120 |
| <b>Energy (kcal):</b>                    | 507  |
| <b>Fat (g):</b>                          | 30   |
| <b>Fat of which saturates (g):</b>       | 19   |
| <b>Carbohydrate (g):</b>                 | 49   |
| <b>Carbohydrate of which sugars (g):</b> | 46   |
| <b>Protein (g):</b>                      | 5.8  |
| <b>Salt (g):</b>                         | 0.02 |

**Product Name:** Anna's Ginger Thins 150g

**Ingredients:** **WHEAT** Flour, Sugar, Vegetable Oils (Palm, Rapeseed, Coconut), Sugar Syrup, Salt, Raising Agent (Sodium Hydrogen Carbonate), Cinnamon, Salt, Ginger 0.3%, Cloves.

**Allergens:** For allergens, see ingredients in **CAPITALS**. May contain traces of **ALMOND**.

**Storage:** Store in a cool dry place, avoiding direct sunlight.

**Typical Value per 100g**

|  |      |
|--|------|
| <b>Energy (kj):</b>                      | 1979 |
| <b>Energy (kcal):</b>                    | 471  |
| <b>Fat (g):</b>                          | 19   |
| <b>Fat of which saturates (g):</b>       | 9    |
| <b>Carbohydrate (g):</b>                 | 70   |
| <b>Carbohydrate of which sugars (g):</b> | 33   |
| <b>Protein (g):</b>                      | 5.4  |
| <b>Salt (g):</b>                         | 1.19 |

